

RoHS TEST REPORT

Applicant : LIGHTAC INDUSTRY CO., LIMITED

Address : NO.8, TANGFANG, TONGZHOU, NANTONG CITY, JIANGSU,CHINA.

Manufacturer : LIGHTAC INDUSTRY CO.,LIMITED

Address : NO.8, TANGFANG, TONGZHOU, NANTONG CITY, JIANGSU,CHINA.

The following sample(s) was /were submitted and identified on behalf of the clients as :

Sample Name : LED BULB

Sample Model : LT-HYD7W, LT-HYD3W, LT-HYD4W,LT-HYD5W,LT-GYD1W,LT-HYD-E14/G4/G9

Trademark: N/A

Sample Received Date : Dec. 04, 2017

Testing Period : Dec. 05, 2017 To Dec. 06, 2017

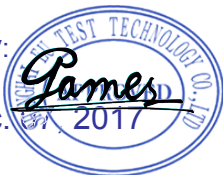
Test Requested : Selected test(s) as requested by client

Test Method : Please refer to next page(s).

Test Result : Please refer to next page(s).

Conclusion : Based on the performed tests on submitted sample(s), the results of Lead, Mercury, Cadmium, Hexavalent chromium, Polybrominated biphenyls (PBBs), Polybrominated diphenyl ethers (PBDEs) and Phthalates such as Bis(2-ethylhexyl) phthalate (DEHP) , Butyl benzyl phthalate (BBP), Dibutyl phthalate (DBP) , and Diisobutyl phthalate (DIBP) comply with the limits as set by RoHS Directive (EU) 2015/863 amending Annex II to Directive 2011/65/EU.

Tested By:



Date: Dec. 07, 2017

Approved



Date: Dec. 07, 2017

Sample Description:

No.	Name
1	PCB
2	IC
3	SMD Resistor
4	SMD Capacitor
5	Tin
6	Y capacitance
7	Foam
8	Aluminium
9	Red Wire
10	White Wire
11	Green Wire
12	SMD LED
13	SMD triode
14	CAP
15	Color ring resistance
16	Black Electrolytic capacitor
17	Green Electrolytic capacitor
18	Transformer
19	White plastic
20	White transparent plastic
21	Blue plastic

Test Result(No.1):

Test Item(s)	Unit	Test Method (Reference)	Result	MDL	Limit
Cadmium(Cd)	mg/kg	IEC 62321-5:2013, ICP-OES	N.D.	2	100
Lead(Pb)	mg/kg	IEC 62321-5:2013, ICP-OES	N.D.	2	1000
Mercury(Hg)	mg/kg	IEC 62321-4:2013, ICP-OES	N.D.	2	1000
Hexavalent Chromium(CrVI)	mg/kg	IEC 62321:2008, UV-Vis	N.D.	2	1000
Sum of PBBs	mg/kg	IEC 62321-6:2015, GC-MS	N.D.	--	1000
Monobromobiphenyl	mg/kg	IEC 62321-6:2015, GC-MS	N.D.	5	--
Dibromobiphenyl	mg/kg	IEC 62321-6:2015, GC-MS	N.D.	5	--
Tribromobiphenyl	mg/kg	IEC 62321-6:2015, GC-MS	N.D.	5	--
Tetrabromobiphenyl	mg/kg	IEC 62321-6:2015, GC-MS	N.D.	5	--
Pentabromobiphenyl	mg/kg	IEC 62321-6:2015, GC-MS	N.D.	5	--
Hexabromobiphenyl	mg/kg	IEC 62321-6:2015, GC-MS	N.D.	5	--
Heptabromobiphenyl	mg/kg	IEC 62321-6:2015, GC-MS	N.D.	5	--
Octabromobiphenyl	mg/kg	IEC 62321-6:2015, GC-MS	N.D.	5	--
Nonabromobiphenyl	mg/kg	IEC 62321-6:2015, GC-MS	N.D.	5	--
Decabromobiphenyl	mg/kg	IEC 62321-6:2015, GC-MS	N.D.	5	--
Sum of PBDEs	mg/kg	IEC 62321-6:2015, GC-MS	N.D.	5	1000
Monobromodiphenyl ether	mg/kg	IEC 62321-6:2015, GC-MS	N.D.	5	--
Dibromodiphenyl ether	mg/kg	IEC 62321-6:2015, GC-MS	N.D.	5	--
Tribromodiphenyl ether	mg/kg	IEC 62321-6:2015, GC-MS	N.D.	5	--
Tetrabromodiphenyl ether	mg/kg	IEC 62321-6:2015, GC-MS	N.D.	5	--
Pentabromodiphenyl ether	mg/kg	IEC 62321-6:2015, GC-MS	N.D.	5	--
Hexabromodiphenyl ether	mg/kg	IEC 62321-6:2015, GC-MS	N.D.	5	--
Heptabromodiphenyl ether	mg/kg	IEC 62321-6:2015, GC-MS	N.D.	5	--
Octabromodiphenyl ether	mg/kg	IEC 62321-6:2015, GC-MS	N.D.	5	--
Nonabromodiphenyl ether	mg/kg	IEC 62321-6:2015, GC-MS	N.D.	5	--
--Decabromodiphenyl ether	mg/kg	IEC 62321-6:2015, GC-MS	N.D.	5	--
Dibutyl Phthalate(DBP)	mg/kg	IEC 62321-8 (111/321/CD), GC-MS	N.D.	50	1000
Benzylbutyl Phthalate(BBP)	mg/kg	IEC 62321-8 (111/321/CD), GC-MS	N.D.	50	1000

Di-(2-ethylhexyl) Phthalate(DEHP)	mg/kg	IEC 62321-8 (111/321/CD), GC-MS	N.D.	50	1000
Diisobutyl phthalate (DIBP)	mg/kg	IEC 62321-8 (111/321/CD), GC-MS	N.D.	50	1000

Test Result(No.2):

Test Item(s)	Unit	Test Method (Reference)	Result	MDL	Limit
Cadmium(Cd)	mg/kg	IEC 62321-5:2013, ICP-OES	N.D.	2	100
Lead(Pb)	mg/kg	IEC 62321-5:2013, ICP-OES	N.D.	2	1000
Mercury(Hg)	mg/kg	IEC 62321-4:2013, ICP-OES	N.D.	2	1000
Hexavalent Chromium(CrVI)	mg/kg	IEC 62321:2008, UV-Vis	N.D.	2	1000
Sum of PBBs	mg/kg	IEC 62321-6:2015, GC-MS	N.D.	--	1000
Monobromobiphenyl	mg/kg	IEC 62321-6:2015, GC-MS	N.D.	5	--
Dibromobiphenyl	mg/kg	IEC 62321-6:2015, GC-MS	N.D.	5	--
Tribromobiphenyl	mg/kg	IEC 62321-6:2015, GC-MS	N.D.	5	--
Tetrabromobiphenyl	mg/kg	IEC 62321-6:2015, GC-MS	N.D.	5	--
Pentabromobiphenyl	mg/kg	IEC 62321-6:2015, GC-MS	N.D.	5	--
Hexabromobiphenyl	mg/kg	IEC 62321-6:2015, GC-MS	N.D.	5	--
Heptabromobiphenyl	mg/kg	IEC 62321-6:2015, GC-MS	N.D.	5	--
Octabromobiphenyl	mg/kg	IEC 62321-6:2015, GC-MS	N.D.	5	--
Nonabromobiphenyl	mg/kg	IEC 62321-6:2015, GC-MS	N.D.	5	--
Decabromobiphenyl	mg/kg	IEC 62321-6:2015, GC-MS	N.D.	5	--
Sum of PBDEs	mg/kg	IEC 62321-6:2015, GC-MS	N.D.	5	1000
Monobromodiphenyl ether	mg/kg	IEC 62321-6:2015, GC-MS	N.D.	5	--
Dibromodiphenyl ether	mg/kg	IEC 62321-6:2015, GC-MS	N.D.	5	--
Tribromodiphenyl ether	mg/kg	IEC 62321-6:2015, GC-MS	N.D.	5	--
Tetrabromodiphenyl ether	mg/kg	IEC 62321-6:2015, GC-MS	N.D.	5	--
Pentabromodiphenyl ether	mg/kg	IEC 62321-6:2015, GC-MS	N.D.	5	--
Hexabromodiphenyl ether	mg/kg	IEC 62321-6:2015, GC-MS	N.D.	5	--
Heptabromodiphenyl ether	mg/kg	IEC 62321-6:2015, GC-MS	N.D.	5	--
Octabromodiphenyl ether	mg/kg	IEC 62321-6:2015, GC-MS	N.D.	5	--
Nonabromodiphenyl ether	mg/kg	IEC 62321-6:2015, GC-MS	N.D.	5	--

--Decabromodiphenyl ether	mg/kg	IEC 62321-6:2015, GC-MS	N.D.	5	--
Dibutyl Phthalate(DBP)	mg/kg	IEC 62321-8 (111/321/CD), GC-MS	N.D.	50	1000
Benzylbutyl Phthalate(BBP)	mg/kg	IEC 62321-8 (111/321/CD), GC-MS	N.D.	50	1000
Di-(2-ethylhexyl) Phthalate(DEHP)	mg/kg	IEC 62321-8 (111/321/CD), GC-MS	N.D.	50	1000
Diisobutyl phthalate (DIBP)	mg/kg	IEC 62321-8 (111/321/CD), GC-MS	N.D.	50	1000

Test Result(No.3):

Test Item(s)	Unit	Test Method (Reference)	Result	MDL	Limit
Cadmium(Cd)	mg/kg	IEC 62321-5:2013, ICP-OES	N.D.	2	100
Lead(Pb)	mg/kg	IEC 62321-5:2013, ICP-OES	N.D.	2	1000
Mercury(Hg)	mg/kg	IEC 62321-4:2013, ICP-OES	N.D.	2	1000
Hexavalent Chromium(CrVI)	mg/kg	IEC 62321:2008, UV-Vis	N.D.	2	1000
Sum of PBBs	mg/kg	IEC 62321-6:2015, GC-MS	N.D.	--	1000
Monobromobiphenyl	mg/kg	IEC 62321-6:2015, GC-MS	N.D.	5	--
Dibromobiphenyl	mg/kg	IEC 62321-6:2015, GC-MS	N.D.	5	--
Tribromobiphenyl	mg/kg	IEC 62321-6:2015, GC-MS	N.D.	5	--
Tetrabromobiphenyl	mg/kg	IEC 62321-6:2015, GC-MS	N.D.	5	--
Pentabromobiphenyl	mg/kg	IEC 62321-6:2015, GC-MS	N.D.	5	--
Hexabromobiphenyl	mg/kg	IEC 62321-6:2015, GC-MS	N.D.	5	--
Heptabromobiphenyl	mg/kg	IEC 62321-6:2015, GC-MS	N.D.	5	--
Octabromobiphenyl	mg/kg	IEC 62321-6:2015, GC-MS	N.D.	5	--
Nonabromobiphenyl	mg/kg	IEC 62321-6:2015, GC-MS	N.D.	5	--
Decabromobiphenyl	mg/kg	IEC 62321-6:2015, GC-MS	N.D.	5	--
Sum of PBDEs	mg/kg	IEC 62321-6:2015, GC-MS	N.D.	5	1000
Monobromodiphenyl ether	mg/kg	IEC 62321-6:2015, GC-MS	N.D.	5	--
Dibromodiphenyl ether	mg/kg	IEC 62321-6:2015, GC-MS	N.D.	5	--
Tribromodiphenyl ether	mg/kg	IEC 62321-6:2015, GC-MS	N.D.	5	--
Tetrabromodiphenyl ether	mg/kg	IEC 62321-6:2015, GC-MS	N.D.	5	--
Pentabromodiphenyl ether	mg/kg	IEC 62321-6:2015, GC-MS	N.D.	5	--
Hexabromodiphenyl ether	mg/kg	IEC 62321-6:2015, GC-MS	N.D.	5	--

Heptabromodiphenyl ether	mg/kg	IEC 62321-6:2015, GC-MS	N.D.	5	--
Octabromodiphenyl ether	mg/kg	IEC 62321-6:2015, GC-MS	N.D.	5	--
Nonabromodiphenyl ether	mg/kg	IEC 62321-6:2015, GC-MS	N.D.	5	--
--Decabromodiphenyl ether	mg/kg	IEC 62321-6:2015, GC-MS	N.D.	5	--
Dibutyl Phthalate(DBP)	mg/kg	IEC 62321-8 (111/321/CD), GC-MS	N.D.	50	1000
Benzylbutyl Phthalate(BBP)	mg/kg	IEC 62321-8 (111/321/CD), GC-MS	N.D.	50	1000
Di-(2-ethylhexyl) Phthalate(DEHP)	mg/kg	IEC 62321-8 (111/321/CD), GC-MS	N.D.	50	1000
Diisobutyl phthalate (DIBP)	mg/kg	IEC 62321-8 (111/321/CD), GC-MS	N.D.	50	1000

Test Result(No.4):

Test Item(s)	Unit	Test Method (Reference)	Result	MDL	Limit
Cadmium(Cd)	mg/kg	IEC 62321-5:2013, ICP-OES	N.D.	2	100
Lead(Pb)	mg/kg	IEC 62321-5:2013, ICP-OES	N.D.	2	1000
Mercury(Hg)	mg/kg	IEC 62321-4:2013, ICP-OES	N.D.	2	1000
Hexavalent Chromium(CrVI)	mg/kg	IEC 62321:2008, UV-Vis	N.D.	2	1000
Sum of PBBs	mg/kg	IEC 62321-6:2015, GC-MS	N.D.	--	1000
Monobromobiphenyl	mg/kg	IEC 62321-6:2015, GC-MS	N.D.	5	--
Dibromobiphenyl	mg/kg	IEC 62321-6:2015, GC-MS	N.D.	5	--
Tribromobiphenyl	mg/kg	IEC 62321-6:2015, GC-MS	N.D.	5	--
Tetrabromobiphenyl	mg/kg	IEC 62321-6:2015, GC-MS	N.D.	5	--
Pentabromobiphenyl	mg/kg	IEC 62321-6:2015, GC-MS	N.D.	5	--
Hexabromobiphenyl	mg/kg	IEC 62321-6:2015, GC-MS	N.D.	5	--
Heptabromobiphenyl	mg/kg	IEC 62321-6:2015, GC-MS	N.D.	5	--
Octabromobiphenyl	mg/kg	IEC 62321-6:2015, GC-MS	N.D.	5	--
Nonabromobiphenyl	mg/kg	IEC 62321-6:2015, GC-MS	N.D.	5	--
Decabromobiphenyl	mg/kg	IEC 62321-6:2015, GC-MS	N.D.	5	--
Sum of PBDEs	mg/kg	IEC 62321-6:2015, GC-MS	N.D.	5	1000
Monobromodiphenyl ether	mg/kg	IEC 62321-6:2015, GC-MS	N.D.	5	--
Dibromodiphenyl ether	mg/kg	IEC 62321-6:2015, GC-MS	N.D.	5	--
Tribromodiphenyl ether	mg/kg	IEC 62321-6:2015, GC-MS	N.D.	5	--

Tetrabromodiphenyl ether	mg/kg	IEC 62321-6:2015, GC-MS	N.D.	5	--
Pentabromodiphenyl ether	mg/kg	IEC 62321-6:2015, GC-MS	N.D.	5	--
Hexabromodiphenyl ether	mg/kg	IEC 62321-6:2015, GC-MS	N.D.	5	--
Heptabromodiphenyl ether	mg/kg	IEC 62321-6:2015, GC-MS	N.D.	5	--
Octabromodiphenyl ether	mg/kg	IEC 62321-6:2015, GC-MS	N.D.	5	--
Nonabromodiphenyl ether	mg/kg	IEC 62321-6:2015, GC-MS	N.D.	5	--
--Decabromodiphenyl ether	mg/kg	IEC 62321-6:2015, GC-MS	N.D.	5	--
Dibutyl Phthalate(DBP)	mg/kg	IEC 62321-8 (111/321/CD), GC-MS	N.D.	50	1000
Benzylbutyl Phthalate(BBP)	mg/kg	IEC 62321-8 (111/321/CD), GC-MS	N.D.	50	1000
Di-(2-ethylhexyl) Phthalate(DEHP)	mg/kg	IEC 62321-8 (111/321/CD), GC-MS	N.D.	50	1000
Diisobutyl phthalate (DIBP)	mg/kg	IEC 62321-8 (111/321/CD), GC-MS	N.D.	50	1000

Test Result(No.5):

Test Item(s)	Unit	Test Method (Reference)	Result	MDL	Limit
Cadmium(Cd)	mg/kg	IEC 62321-5:2013, ICP-OES	N.D.	2	100
Lead(Pb)	mg/kg	IEC 62321-5:2013, ICP-OES	N.D.	2	1000
Mercury(Hg)	mg/kg	IEC 62321-4:2013, ICP-OES	N.D.	2	1000
Hexavalent Chromium(CrVI)	mg/kg	IEC 62321:2008, UV-Vis	N.D.	2	1000
Sum of PBBs	mg/kg	IEC 62321-6:2015, GC-MS	N.A.	--	1000
Monobromobiphenyl	mg/kg	IEC 62321-6:2015, GC-MS	N.D.	5	--
Dibromobiphenyl	mg/kg	IEC 62321-6:2015, GC-MS	N.D.	5	--
Tribromobiphenyl	mg/kg	IEC 62321-6:2015, GC-MS	N.D.	5	--
Tetrabromobiphenyl	mg/kg	IEC 62321-6:2015, GC-MS	N.D.	5	--
Pentabromobiphenyl	mg/kg	IEC 62321-6:2015, GC-MS	N.D.	5	--
Hexabromobiphenyl	mg/kg	IEC 62321-6:2015, GC-MS	N.D.	5	--
Heptabromobiphenyl	mg/kg	IEC 62321-6:2015, GC-MS	N.D.	5	--
Octabromobiphenyl	mg/kg	IEC 62321-6:2015, GC-MS	N.D.	5	--
Nonabromobiphenyl	mg/kg	IEC 62321-6:2015, GC-MS	N.D.	5	--
Decabromobiphenyl	mg/kg	IEC 62321-6:2015, GC-MS	N.D.	5	--
Sum of PBDEs	mg/kg	IEC 62321-6:2015, GC-MS	N.A.	5	1000

Monobromodiphenyl ether	mg/kg	IEC 62321-6:2015, GC-MS	N.D.	5	--
Dibromodiphenyl ether	mg/kg	IEC 62321-6:2015, GC-MS	N.D.	5	--
Tribromodiphenyl ether	mg/kg	IEC 62321-6:2015, GC-MS	N.D.	5	--
Tetrabromodiphenyl ether	mg/kg	IEC 62321-6:2015, GC-MS	N.D.	5	--
Pentabromodiphenyl ether	mg/kg	IEC 62321-6:2015, GC-MS	N.D.	5	--
Hexabromodiphenyl ether	mg/kg	IEC 62321-6:2015, GC-MS	N.D.	5	--
Heptabromodiphenyl ether	mg/kg	IEC 62321-6:2015, GC-MS	N.D.	5	--
Octabromodiphenyl ether	mg/kg	IEC 62321-6:2015, GC-MS	N.D.	5	--
Nonabromodiphenyl ether	mg/kg	IEC 62321-6:2015, GC-MS	N.D.	5	--
--Decabromodiphenyl ether	mg/kg	IEC 62321-6:2015, GC-MS	N.D.	5	--
Dibutyl Phthalate(DBP)	mg/kg	IEC 62321-8 (111/321/CD), GC-MS	N.A.	50	1000
Benzylbutyl Phthalate(BBP)	mg/kg	IEC 62321-8 (111/321/CD), GC-MS	N.A.	50	1000
Di-(2-ethylhexyl) Phthalate(DEHP)	mg/kg	IEC 62321-8 (111/321/CD), GC-MS	N.A.	50	1000
Diisobutyl phthalate (DIBP)	mg/kg	IEC 62321-8 (111/321/CD), GC-MS	N.A.	50	1000

Test Result(No.6):

Test Item(s)	Unit	Test Method (Reference)	Result	MDL	Limit
Cadmium(Cd)	mg/kg	IEC 62321-5:2013, ICP-OES	N.D.	2	100
Lead(Pb)	mg/kg	IEC 62321-5:2013, ICP-OES	N.D.	2	1000
Mercury(Hg)	mg/kg	IEC 62321-4:2013, ICP-OES	N.D.	2	1000
Hexavalent Chromium(CrVI)	mg/kg	IEC 62321:2008, UV-Vis	N.D.	2	1000
Sum of PBBs	mg/kg	IEC 62321-6:2015, GC-MS	N.D.	--	1000
Monobromobiphenyl	mg/kg	IEC 62321-6:2015, GC-MS	N.D.	5	--
Dibromobiphenyl	mg/kg	IEC 62321-6:2015, GC-MS	N.D.	5	--
Tribromobiphenyl	mg/kg	IEC 62321-6:2015, GC-MS	N.D.	5	--
Tetrabromobiphenyl	mg/kg	IEC 62321-6:2015, GC-MS	N.D.	5	--
Pentabromobiphenyl	mg/kg	IEC 62321-6:2015, GC-MS	N.D.	5	--
Hexabromobiphenyl	mg/kg	IEC 62321-6:2015, GC-MS	N.D.	5	--
Heptabromobiphenyl	mg/kg	IEC 62321-6:2015, GC-MS	N.D.	5	--
Octabromobiphenyl	mg/kg	IEC 62321-6:2015, GC-MS	N.D.	5	--

Nonabromobiphenyl	mg/kg	IEC 62321-6:2015, GC-MS	N.D.	5	--
Decabromobiphenyl	mg/kg	IEC 62321-6:2015, GC-MS	N.D.	5	--
Sum of PBDEs	mg/kg	IEC 62321-6:2015, GC-MS	N.D.	5	1000
Monobromodiphenyl ether	mg/kg	IEC 62321-6:2015, GC-MS	N.D.	5	--
Dibromodiphenyl ether	mg/kg	IEC 62321-6:2015, GC-MS	N.D.	5	--
Tribromodiphenyl ether	mg/kg	IEC 62321-6:2015, GC-MS	N.D.	5	--
Tetrabromodiphenyl ether	mg/kg	IEC 62321-6:2015, GC-MS	N.D.	5	--
Pentabromodiphenyl ether	mg/kg	IEC 62321-6:2015, GC-MS	N.D.	5	--
Hexabromodiphenyl ether	mg/kg	IEC 62321-6:2015, GC-MS	N.D.	5	--
Heptabromodiphenyl ether	mg/kg	IEC 62321-6:2015, GC-MS	N.D.	5	--
Octabromodiphenyl ether	mg/kg	IEC 62321-6:2015, GC-MS	N.D.	5	--
Nonabromodiphenyl ether	mg/kg	IEC 62321-6:2015, GC-MS	N.D.	5	--
--Decabromodiphenyl ether	mg/kg	IEC 62321-6:2015, GC-MS	N.D.	5	--
Dibutyl Phthalate(DBP)	mg/kg	IEC 62321-8 (111/321/CD), GC-MS	N.D.	50	1000
Benzylbutyl Phthalate(BBP)	mg/kg	IEC 62321-8 (111/321/CD), GC-MS	N.D.	50	1000
Di-(2-ethylhexyl) Phthalate(DEHP)	mg/kg	IEC 62321-8 (111/321/CD), GC-MS	N.D.	50	1000
Diisobutyl phthalate (DIBP)	mg/kg	IEC 62321-8 (111/321/CD), GC-MS	N.D.	50	1000

Test Result(No.7):

Test Item(s)	Unit	Test Method (Reference)	Result	MDL	Limit
Cadmium(Cd)	mg/kg	IEC 62321-5:2013, ICP-OES	N.D.	2	100
Lead(Pb)	mg/kg	IEC 62321-5:2013, ICP-OES	N.D.	2	1000
Mercury(Hg)	mg/kg	IEC 62321-4:2013, ICP-OES	N.D.	2	1000
Hexavalent Chromium(CrVI)	mg/kg	IEC 62321:2008, UV-Vis	N.D.	2	1000
Sum of PBBs	mg/kg	IEC 62321-6:2015, GC-MS	N.D.	--	1000
Monobromobiphenyl	mg/kg	IEC 62321-6:2015, GC-MS	N.D.	5	--
Dibromobiphenyl	mg/kg	IEC 62321-6:2015, GC-MS	N.D.	5	--
Tribromobiphenyl	mg/kg	IEC 62321-6:2015, GC-MS	N.D.	5	--
Tetrabromobiphenyl	mg/kg	IEC 62321-6:2015, GC-MS	N.D.	5	--
Pentabromobiphenyl	mg/kg	IEC 62321-6:2015, GC-MS	N.D.	5	--

Hexabromobiphenyl	mg/kg	IEC 62321-6:2015, GC-MS	N.D.	5	--
Heptabromobiphenyl	mg/kg	IEC 62321-6:2015, GC-MS	N.D.	5	--
Octabromobiphenyl	mg/kg	IEC 62321-6:2015, GC-MS	N.D.	5	--
Nonabromobiphenyl	mg/kg	IEC 62321-6:2015, GC-MS	N.D.	5	--
Decabromobiphenyl	mg/kg	IEC 62321-6:2015, GC-MS	N.D.	5	--
Sum of PBDEs	mg/kg	IEC 62321-6:2015, GC-MS	N.D.	5	1000
Monobromodiphenyl ether	mg/kg	IEC 62321-6:2015, GC-MS	N.D.	5	--
Dibromodiphenyl ether	mg/kg	IEC 62321-6:2015, GC-MS	N.D.	5	--
Tribromodiphenyl ether	mg/kg	IEC 62321-6:2015, GC-MS	N.D.	5	--
Tetrabromodiphenyl ether	mg/kg	IEC 62321-6:2015, GC-MS	N.D.	5	--
Pentabromodiphenyl ether	mg/kg	IEC 62321-6:2015, GC-MS	N.D.	5	--
Hexabromodiphenyl ether	mg/kg	IEC 62321-6:2015, GC-MS	N.D.	5	--
Heptabromodiphenyl ether	mg/kg	IEC 62321-6:2015, GC-MS	N.D.	5	--
Octabromodiphenyl ether	mg/kg	IEC 62321-6:2015, GC-MS	N.D.	5	--
Nonabromodiphenyl ether	mg/kg	IEC 62321-6:2015, GC-MS	N.D.	5	--
--Decabromodiphenyl ether	mg/kg	IEC 62321-6:2015, GC-MS	N.D.	5	--
Dibutyl Phthalate(DBP)	mg/kg	IEC 62321-8 (111/321/CD), GC-MS	N.D.	50	1000
Benzylbutyl Phthalate(BBP)	mg/kg	IEC 62321-8 (111/321/CD), GC-MS	N.D.	50	1000
Di-(2-ethylhexyl) Phthalate(DEHP)	mg/kg	IEC 62321-8 (111/321/CD), GC-MS	N.D.	50	1000
Diisobutyl phthalate (DIBP)	mg/kg	IEC 62321-8 (111/321/CD), GC-MS	N.D.	50	1000

Test Result(No.8):

Test Item(s)	Unit	Test Method (Reference)	Result	MDL	Limit
Cadmium(Cd)	mg/kg	IEC 62321-5:2013, ICP-OES	N.D.	2	100
Lead(Pb)	mg/kg	IEC 62321-5:2013, ICP-OES	N.D.	2	1000
Mercury(Hg)	mg/kg	IEC 62321-4:2013, ICP-OES	N.D.	2	1000
Hexavalent Chromium(CrVI)	mg/kg	IEC 62321:2008, UV-Vis	N.D.	2	1000
Sum of PBBs	mg/kg	IEC 62321-6:2015, GC-MS	N.A.	--	1000
Monobromobiphenyl	mg/kg	IEC 62321-6:2015, GC-MS	N.D.	5	--
Dibromobiphenyl	mg/kg	IEC 62321-6:2015, GC-MS	N.D.	5	--

Tribromobiphenyl	mg/kg	IEC 62321-6:2015, GC-MS	N.D.	5	--
Tetrabromobiphenyl	mg/kg	IEC 62321-6:2015, GC-MS	N.D.	5	--
Pentabromobiphenyl	mg/kg	IEC 62321-6:2015, GC-MS	N.D.	5	--
Hexabromobiphenyl	mg/kg	IEC 62321-6:2015, GC-MS	N.D.	5	--
Heptabromobiphenyl	mg/kg	IEC 62321-6:2015, GC-MS	N.D.	5	--
Octabromobiphenyl	mg/kg	IEC 62321-6:2015, GC-MS	N.D.	5	--
Nonabromobiphenyl	mg/kg	IEC 62321-6:2015, GC-MS	N.D.	5	--
Decabromobiphenyl	mg/kg	IEC 62321-6:2015, GC-MS	N.D.	5	--
Sum of PBDEs	mg/kg	IEC 62321-6:2015, GC-MS	N.A.	5	1000
Monobromodiphenyl ether	mg/kg	IEC 62321-6:2015, GC-MS	N.D.	5	--
Dibromodiphenyl ether	mg/kg	IEC 62321-6:2015, GC-MS	N.D.	5	--
Tribromodiphenyl ether	mg/kg	IEC 62321-6:2015, GC-MS	N.D.	5	--
Tetrabromodiphenyl ether	mg/kg	IEC 62321-6:2015, GC-MS	N.D.	5	--
Pentabromodiphenyl ether	mg/kg	IEC 62321-6:2015, GC-MS	N.D.	5	--
Hexabromodiphenyl ether	mg/kg	IEC 62321-6:2015, GC-MS	N.D.	5	--
Heptabromodiphenyl ether	mg/kg	IEC 62321-6:2015, GC-MS	N.D.	5	--
Octabromodiphenyl ether	mg/kg	IEC 62321-6:2015, GC-MS	N.D.	5	--
Nonabromodiphenyl ether	mg/kg	IEC 62321-6:2015, GC-MS	N.D.	5	--
--Decabromodiphenyl ether	mg/kg	IEC 62321-6:2015, GC-MS	N.D.	5	--
Dibutyl Phthalate(DBP)	mg/kg	IEC 62321-8 (111/321/CD), GC-MS	N.A.	50	1000
Benzylbutyl Phthalate(BBP)	mg/kg	IEC 62321-8 (111/321/CD), GC-MS	N.A.	50	1000
Di-(2-ethylhexyl) Phthalate(DEHP)	mg/kg	IEC 62321-8 (111/321/CD), GC-MS	N.A.	50	1000
Diisobutyl phthalate (DIBP)	mg/kg	IEC 62321-8 (111/321/CD), GC-MS	N.A.	50	1000

Test Result(No.9):

Test Item(s)	Unit	Test Method (Reference)	Result	MDL	Limit
Cadmium(Cd)	mg/kg	IEC 62321-5:2013, ICP-OES	N.D.	2	100
Lead(Pb)	mg/kg	IEC 62321-5:2013, ICP-OES	N.D.	2	1000
Mercury(Hg)	mg/kg	IEC 62321-4:2013, ICP-OES	N.D.	2	1000
Hexavalent Chromium(CrVI)	mg/kg	IEC 62321:2008, UV-Vis	N.D.	2	1000

Sum of PBBs	mg/kg	IEC 62321-6:2015, GC-MS	N.D.	--	1000
Monobromobiphenyl	mg/kg	IEC 62321-6:2015, GC-MS	N.D.	5	--
Dibromobiphenyl	mg/kg	IEC 62321-6:2015, GC-MS	N.D.	5	--
Tribromobiphenyl	mg/kg	IEC 62321-6:2015, GC-MS	N.D.	5	--
Tetrabromobiphenyl	mg/kg	IEC 62321-6:2015, GC-MS	N.D.	5	--
Pentabromobiphenyl	mg/kg	IEC 62321-6:2015, GC-MS	N.D.	5	--
Hexabromobiphenyl	mg/kg	IEC 62321-6:2015, GC-MS	N.D.	5	--
Heptabromobiphenyl	mg/kg	IEC 62321-6:2015, GC-MS	N.D.	5	--
Octabromobiphenyl	mg/kg	IEC 62321-6:2015, GC-MS	N.D.	5	--
Nonabromobiphenyl	mg/kg	IEC 62321-6:2015, GC-MS	N.D.	5	--
Decabromobiphenyl	mg/kg	IEC 62321-6:2015, GC-MS	N.D.	5	--
Sum of PBDEs	mg/kg	IEC 62321-6:2015, GC-MS	N.D.	5	1000
Monobromodiphenyl ether	mg/kg	IEC 62321-6:2015, GC-MS	N.D.	5	--
Dibromodiphenyl ether	mg/kg	IEC 62321-6:2015, GC-MS	N.D.	5	--
Tribromodiphenyl ether	mg/kg	IEC 62321-6:2015, GC-MS	N.D.	5	--
Tetrabromodiphenyl ether	mg/kg	IEC 62321-6:2015, GC-MS	N.D.	5	--
Pentabromodiphenyl ether	mg/kg	IEC 62321-6:2015, GC-MS	N.D.	5	--
Hexabromodiphenyl ether	mg/kg	IEC 62321-6:2015, GC-MS	N.D.	5	--
Heptabromodiphenyl ether	mg/kg	IEC 62321-6:2015, GC-MS	N.D.	5	--
Octabromodiphenyl ether	mg/kg	IEC 62321-6:2015, GC-MS	N.D.	5	--
Nonabromodiphenyl ether	mg/kg	IEC 62321-6:2015, GC-MS	N.D.	5	--
--Decabromodiphenyl ether	mg/kg	IEC 62321-6:2015, GC-MS	N.D.	5	--
Dibutyl Phthalate(DBP)	mg/kg	IEC 62321-8 (111/321/CD), GC-MS	N.D.	50	1000
Benzylbutyl Phthalate(BBP)	mg/kg	IEC 62321-8 (111/321/CD), GC-MS	N.D.	50	1000
Di-(2-ethylhexyl) Phthalate(DEHP)	mg/kg	IEC 62321-8 (111/321/CD), GC-MS	N.D.	50	1000
Diisobutyl phthalate (DIBP)	mg/kg	IEC 62321-8 (111/321/CD), GC-MS	N.D.	50	1000

Test Result(No.10):

Test Item(s)	Unit	Test Method (Reference)	Result	MDL	Limit
Cadmium(Cd)	mg/kg	IEC 62321-5:2013, ICP-OES	N.D.	2	100

Lead(Pb)	mg/kg	IEC 62321-5:2013, ICP-OES	N.D.	2	1000
Mercury(Hg)	mg/kg	IEC 62321-4:2013, ICP-OES	N.D.	2	1000
Hexavalent Chromium(CrVI)	mg/kg	IEC 62321:2008, UV-Vis	N.D.	2	1000
Sum of PBBs	mg/kg	IEC 62321-6:2015, GC-MS	N.D.	--	1000
Monobromobiphenyl	mg/kg	IEC 62321-6:2015, GC-MS	N.D.	5	--
Dibromobiphenyl	mg/kg	IEC 62321-6:2015, GC-MS	N.D.	5	--
Tribromobiphenyl	mg/kg	IEC 62321-6:2015, GC-MS	N.D.	5	--
Tetrabromobiphenyl	mg/kg	IEC 62321-6:2015, GC-MS	N.D.	5	--
Pentabromobiphenyl	mg/kg	IEC 62321-6:2015, GC-MS	N.D.	5	--
Hexabromobiphenyl	mg/kg	IEC 62321-6:2015, GC-MS	N.D.	5	--
Heptabromobiphenyl	mg/kg	IEC 62321-6:2015, GC-MS	N.D.	5	--
Octabromobiphenyl	mg/kg	IEC 62321-6:2015, GC-MS	N.D.	5	--
Nonabromobiphenyl	mg/kg	IEC 62321-6:2015, GC-MS	N.D.	5	--
Decabromobiphenyl	mg/kg	IEC 62321-6:2015, GC-MS	N.D.	5	--
Sum of PBDEs	mg/kg	IEC 62321-6:2015, GC-MS	N.D.	5	1000
Monobromodiphenyl ether	mg/kg	IEC 62321-6:2015, GC-MS	N.D.	5	--
Dibromodiphenyl ether	mg/kg	IEC 62321-6:2015, GC-MS	N.D.	5	--
Tribromodiphenyl ether	mg/kg	IEC 62321-6:2015, GC-MS	N.D.	5	--
Tetrabromodiphenyl ether	mg/kg	IEC 62321-6:2015, GC-MS	N.D.	5	--
Pentabromodiphenyl ether	mg/kg	IEC 62321-6:2015, GC-MS	N.D.	5	--
Hexabromodiphenyl ether	mg/kg	IEC 62321-6:2015, GC-MS	N.D.	5	--
Heptabromodiphenyl ether	mg/kg	IEC 62321-6:2015, GC-MS	N.D.	5	--
Octabromodiphenyl ether	mg/kg	IEC 62321-6:2015, GC-MS	N.D.	5	--
Nonabromodiphenyl ether	mg/kg	IEC 62321-6:2015, GC-MS	N.D.	5	--
--Decabromodiphenyl ether	mg/kg	IEC 62321-6:2015, GC-MS	N.D.	5	--
Dibutyl Phthalate(DBP)	mg/kg	IEC 62321-8 (111/321/CD), GC-MS	N.D.	50	1000
Benzylbutyl Phthalate(BBP)	mg/kg	IEC 62321-8 (111/321/CD), GC-MS	N.D.	50	1000
Di-(2-ethylhexyl) Phthalate(DEHP)	mg/kg	IEC 62321-8 (111/321/CD), GC-MS	N.D.	50	1000
Diisobutyl phthalate (DIBP)	mg/kg	IEC 62321-8 (111/321/CD), GC-MS	N.D.	50	1000

Test Result(No.11):

Test Item(s)	Unit	Test Method (Reference)	Result	MDL	Limit
Cadmium(Cd)	mg/kg	IEC 62321-5:2013, ICP-OES	N.D.	2	100
Lead(Pb)	mg/kg	IEC 62321-5:2013, ICP-OES	N.D.	2	1000
Mercury(Hg)	mg/kg	IEC 62321-4:2013, ICP-OES	N.D.	2	1000
Hexavalent Chromium(CrVI)	mg/kg	IEC 62321:2008, UV-Vis	N.D.	2	1000
Sum of PBBs	mg/kg	IEC 62321-6:2015, GC-MS	N.D.	--	1000
Monobromobiphenyl	mg/kg	IEC 62321-6:2015, GC-MS	N.D.	5	--
Dibromobiphenyl	mg/kg	IEC 62321-6:2015, GC-MS	N.D.	5	--
Tribromobiphenyl	mg/kg	IEC 62321-6:2015, GC-MS	N.D.	5	--
Tetrabromobiphenyl	mg/kg	IEC 62321-6:2015, GC-MS	N.D.	5	--
Pentabromobiphenyl	mg/kg	IEC 62321-6:2015, GC-MS	N.D.	5	--
Hexabromobiphenyl	mg/kg	IEC 62321-6:2015, GC-MS	N.D.	5	--
Heptabromobiphenyl	mg/kg	IEC 62321-6:2015, GC-MS	N.D.	5	--
Octabromobiphenyl	mg/kg	IEC 62321-6:2015, GC-MS	N.D.	5	--
Nonabromobiphenyl	mg/kg	IEC 62321-6:2015, GC-MS	N.D.	5	--
Decabromobiphenyl	mg/kg	IEC 62321-6:2015, GC-MS	N.D.	5	--
Sum of PBDEs	mg/kg	IEC 62321-6:2015, GC-MS	N.D.	5	1000
Monobromodiphenyl ether	mg/kg	IEC 62321-6:2015, GC-MS	N.D.	5	--
Dibromodiphenyl ether	mg/kg	IEC 62321-6:2015, GC-MS	N.D.	5	--
Tribromodiphenyl ether	mg/kg	IEC 62321-6:2015, GC-MS	N.D.	5	--
Tetrabromodiphenyl ether	mg/kg	IEC 62321-6:2015, GC-MS	N.D.	5	--
Pentabromodiphenyl ether	mg/kg	IEC 62321-6:2015, GC-MS	N.D.	5	--
Hexabromodiphenyl ether	mg/kg	IEC 62321-6:2015, GC-MS	N.D.	5	--
Heptabromodiphenyl ether	mg/kg	IEC 62321-6:2015, GC-MS	N.D.	5	--
Octabromodiphenyl ether	mg/kg	IEC 62321-6:2015, GC-MS	N.D.	5	--
Nonabromodiphenyl ether	mg/kg	IEC 62321-6:2015, GC-MS	N.D.	5	--
--Decabromodiphenyl ether	mg/kg	IEC 62321-6:2015, GC-MS	N.D.	5	--
Dibutyl Phthalate(DBP)	mg/kg	IEC 62321-8 (111/321/CD), GC-MS	N.D.	50	1000
Benzylbutyl Phthalate(BBP)	mg/kg	IEC 62321-8 (111/321/CD), GC-MS	N.D.	50	1000

Di-(2-ethylhexyl) Phthalate(DEHP)	mg/kg	IEC 62321-8 (111/321/CD), GC-MS	N.D.	50	1000
Diisobutyl phthalate (DIBP)	mg/kg	IEC 62321-8 (111/321/CD), GC-MS	N.D.	50	1000

Test Result(No.12):

Test Item(s)	Unit	Test Method (Reference)	Result	MDL	Limit
Cadmium(Cd)	mg/kg	IEC 62321-5:2013, ICP-OES	N.D.	2	100
Lead(Pb)	mg/kg	IEC 62321-5:2013, ICP-OES	N.D.	2	1000
Mercury(Hg)	mg/kg	IEC 62321-4:2013, ICP-OES	N.D.	2	1000
Hexavalent Chromium(CrVI)	mg/kg	IEC 62321:2008, UV-Vis	N.D.	2	1000
Sum of PBBs	mg/kg	IEC 62321-6:2015, GC-MS	N.D.	--	1000
Monobromobiphenyl	mg/kg	IEC 62321-6:2015, GC-MS	N.D.	5	--
Dibromobiphenyl	mg/kg	IEC 62321-6:2015, GC-MS	N.D.	5	--
Tribromobiphenyl	mg/kg	IEC 62321-6:2015, GC-MS	N.D.	5	--
Tetrabromobiphenyl	mg/kg	IEC 62321-6:2015, GC-MS	N.D.	5	--
Pentabromobiphenyl	mg/kg	IEC 62321-6:2015, GC-MS	N.D.	5	--
Hexabromobiphenyl	mg/kg	IEC 62321-6:2015, GC-MS	N.D.	5	--
Heptabromobiphenyl	mg/kg	IEC 62321-6:2015, GC-MS	N.D.	5	--
Octabromobiphenyl	mg/kg	IEC 62321-6:2015, GC-MS	N.D.	5	--
Nonabromobiphenyl	mg/kg	IEC 62321-6:2015, GC-MS	N.D.	5	--
Decabromobiphenyl	mg/kg	IEC 62321-6:2015, GC-MS	N.D.	5	--
Sum of PBDEs	mg/kg	IEC 62321-6:2015, GC-MS	N.D.	5	1000
Monobromodiphenyl ether	mg/kg	IEC 62321-6:2015, GC-MS	N.D.	5	--
Dibromodiphenyl ether	mg/kg	IEC 62321-6:2015, GC-MS	N.D.	5	--
Tribromodiphenyl ether	mg/kg	IEC 62321-6:2015, GC-MS	N.D.	5	--
Tetrabromodiphenyl ether	mg/kg	IEC 62321-6:2015, GC-MS	N.D.	5	--
Pentabromodiphenyl ether	mg/kg	IEC 62321-6:2015, GC-MS	N.D.	5	--
Hexabromodiphenyl ether	mg/kg	IEC 62321-6:2015, GC-MS	N.D.	5	--
Heptabromodiphenyl ether	mg/kg	IEC 62321-6:2015, GC-MS	N.D.	5	--
Octabromodiphenyl ether	mg/kg	IEC 62321-6:2015, GC-MS	N.D.	5	--
Nonabromodiphenyl ether	mg/kg	IEC 62321-6:2015, GC-MS	N.D.	5	--
--Decabromodiphenyl ether	mg/kg	IEC 62321-6:2015, GC-MS	N.D.	5	--

Dibutyl Phthalate(DBP)	mg/kg	IEC 62321-8 (111/321/CD), GC-MS	N.D.	50	1000
Benzylbutyl Phthalate(BBP)	mg/kg	IEC 62321-8 (111/321/CD), GC-MS	N.D.	50	1000
Di-(2-ethylhexyl) Phthalate(DEHP)	mg/kg	IEC 62321-8 (111/321/CD), GC-MS	N.D.	50	1000
Diisobutyl phthalate (DIBP)	mg/kg	IEC 62321-8 (111/321/CD), GC-MS	N.D.	50	1000

Test Result(No.13):

Test Item(s)	Unit	Test Method (Reference)	Result	MDL	Limit
Cadmium(Cd)	mg/kg	IEC 62321-5:2013, ICP-OES	N.D.	2	100
Lead(Pb)	mg/kg	IEC 62321-5:2013, ICP-OES	N.D.	2	1000
Mercury(Hg)	mg/kg	IEC 62321-4:2013, ICP-OES	N.D.	2	1000
Hexavalent Chromium(CrVI)	mg/kg	IEC 62321:2008, UV-Vis	N.D.	2	1000
Sum of PBBs	mg/kg	IEC 62321-6:2015, GC-MS	N.D.	--	1000
Monobromobiphenyl	mg/kg	IEC 62321-6:2015, GC-MS	N.D.	5	--
Dibromobiphenyl	mg/kg	IEC 62321-6:2015, GC-MS	N.D.	5	--
Tribromobiphenyl	mg/kg	IEC 62321-6:2015, GC-MS	N.D.	5	--
Tetrabromobiphenyl	mg/kg	IEC 62321-6:2015, GC-MS	N.D.	5	--
Pentabromobiphenyl	mg/kg	IEC 62321-6:2015, GC-MS	N.D.	5	--
Hexabromobiphenyl	mg/kg	IEC 62321-6:2015, GC-MS	N.D.	5	--
Heptabromobiphenyl	mg/kg	IEC 62321-6:2015, GC-MS	N.D.	5	--
Octabromobiphenyl	mg/kg	IEC 62321-6:2015, GC-MS	N.D.	5	--
Nonabromobiphenyl	mg/kg	IEC 62321-6:2015, GC-MS	N.D.	5	--
Decabromobiphenyl	mg/kg	IEC 62321-6:2015, GC-MS	N.D.	5	--
Sum of PBDEs	mg/kg	IEC 62321-6:2015, GC-MS	N.D.	5	1000
Monobromodiphenyl ether	mg/kg	IEC 62321-6:2015, GC-MS	N.D.	5	--
Dibromodiphenyl ether	mg/kg	IEC 62321-6:2015, GC-MS	N.D.	5	--
Tribromodiphenyl ether	mg/kg	IEC 62321-6:2015, GC-MS	N.D.	5	--
Tetrabromodiphenyl ether	mg/kg	IEC 62321-6:2015, GC-MS	N.D.	5	--
Pentabromodiphenyl ether	mg/kg	IEC 62321-6:2015, GC-MS	N.D.	5	--
Hexabromodiphenyl ether	mg/kg	IEC 62321-6:2015, GC-MS	N.D.	5	--
Heptabromodiphenyl ether	mg/kg	IEC 62321-6:2015, GC-MS	N.D.	5	--

Octabromodiphenyl ether	mg/kg	IEC 62321-6:2015, GC-MS	N.D.	5	--
Nonabromodiphenyl ether	mg/kg	IEC 62321-6:2015, GC-MS	N.D.	5	--
--Decabromodiphenyl ether	mg/kg	IEC 62321-6:2015, GC-MS	N.D.	5	--
Dibutyl Phthalate(DBP)	mg/kg	IEC 62321-8 (111/321/CD), GC-MS	N.D.	50	1000
Benzylbutyl Phthalate(BBP)	mg/kg	IEC 62321-8 (111/321/CD), GC-MS	N.D.	50	1000
Di-(2-ethylhexyl) Phthalate(DEHP)	mg/kg	IEC 62321-8 (111/321/CD), GC-MS	N.D.	50	1000
Diisobutyl phthalate (DIBP)	mg/kg	IEC 62321-8 (111/321/CD), GC-MS	N.D.	50	1000

Test Result(No.14):

Test Item(s)	Unit	Test Method (Reference)	Result	MDL	Limit
Cadmium(Cd)	mg/kg	IEC 62321-5:2013, ICP-OES	N.D.	2	100
Lead(Pb)	mg/kg	IEC 62321-5:2013, ICP-OES	N.D.	2	1000
Mercury(Hg)	mg/kg	IEC 62321-4:2013, ICP-OES	N.D.	2	1000
Hexavalent Chromium(CrVI)	mg/kg	IEC 62321:2008, UV-Vis	N.D.	2	1000
Sum of PBBs	mg/kg	IEC 62321-6:2015, GC-MS	N.A.	--	1000
Monobromobiphenyl	mg/kg	IEC 62321-6:2015, GC-MS	N.D.	5	--
Dibromobiphenyl	mg/kg	IEC 62321-6:2015, GC-MS	N.D.	5	--
Tribromobiphenyl	mg/kg	IEC 62321-6:2015, GC-MS	N.D.	5	--
Tetrabromobiphenyl	mg/kg	IEC 62321-6:2015, GC-MS	N.D.	5	--
Pentabromobiphenyl	mg/kg	IEC 62321-6:2015, GC-MS	N.D.	5	--
Hexabromobiphenyl	mg/kg	IEC 62321-6:2015, GC-MS	N.D.	5	--
Heptabromobiphenyl	mg/kg	IEC 62321-6:2015, GC-MS	N.D.	5	--
Octabromobiphenyl	mg/kg	IEC 62321-6:2015, GC-MS	N.D.	5	--
Nonabromobiphenyl	mg/kg	IEC 62321-6:2015, GC-MS	N.D.	5	--
Decabromobiphenyl	mg/kg	IEC 62321-6:2015, GC-MS	N.D.	5	--
Sum of PBDEs	mg/kg	IEC 62321-6:2015, GC-MS	N.A.	5	1000
Monobromodiphenyl ether	mg/kg	IEC 62321-6:2015, GC-MS	N.D.	5	--
Dibromodiphenyl ether	mg/kg	IEC 62321-6:2015, GC-MS	N.D.	5	--
Tribromodiphenyl ether	mg/kg	IEC 62321-6:2015, GC-MS	N.D.	5	--
Tetrabromodiphenyl ether	mg/kg	IEC 62321-6:2015, GC-MS	N.D.	5	--
Pentabromodiphenyl ether	mg/kg	IEC 62321-6:2015, GC-MS	N.D.	5	--

Hexabromodiphenyl ether	mg/kg	IEC 62321-6:2015, GC-MS	N.D.	5	--
Heptabromodiphenyl ether	mg/kg	IEC 62321-6:2015, GC-MS	N.D.	5	--
Octabromodiphenyl ether	mg/kg	IEC 62321-6:2015, GC-MS	N.D.	5	--
Nonabromodiphenyl ether	mg/kg	IEC 62321-6:2015, GC-MS	N.D.	5	--
--Decabromodiphenyl ether	mg/kg	IEC 62321-6:2015, GC-MS	N.D.	5	--
Dibutyl Phthalate(DBP)	mg/kg	IEC 62321-8 (111/321/CD), GC-MS	N.A.	50	1000
Benzylbutyl Phthalate(BBP)	mg/kg	IEC 62321-8 (111/321/CD), GC-MS	N.A.	50	1000
Di-(2-ethylhexyl) Phthalate(DEHP)	mg/kg	IEC 62321-8 (111/321/CD), GC-MS	N.A.	50	1000
Diisobutyl phthalate (DIBP)	mg/kg	IEC 62321-8 (111/321/CD), GC-MS	N.A.	50	1000

Test Result(No.15):

Test Item(s)	Unit	Test Method (Reference)	Result	MDL	Limit
Cadmium(Cd)	mg/kg	IEC 62321-5:2013, ICP-OES	N.D.	2	100
Lead(Pb)	mg/kg	IEC 62321-5:2013, ICP-OES	N.D.	2	1000
Mercury(Hg)	mg/kg	IEC 62321-4:2013, ICP-OES	N.D.	2	1000
Hexavalent Chromium(CrVI)	mg/kg	IEC 62321:2008, UV-Vis	N.D.	2	1000
Sum of PBBs	mg/kg	IEC 62321-6:2015, GC-MS	N.D.	--	1000
Monobromobiphenyl	mg/kg	IEC 62321-6:2015, GC-MS	N.D.	5	--
Dibromobiphenyl	mg/kg	IEC 62321-6:2015, GC-MS	N.D.	5	--
Tribromobiphenyl	mg/kg	IEC 62321-6:2015, GC-MS	N.D.	5	--
Tetrabromobiphenyl	mg/kg	IEC 62321-6:2015, GC-MS	N.D.	5	--
Pentabromobiphenyl	mg/kg	IEC 62321-6:2015, GC-MS	N.D.	5	--
Hexabromobiphenyl	mg/kg	IEC 62321-6:2015, GC-MS	N.D.	5	--
Heptabromobiphenyl	mg/kg	IEC 62321-6:2015, GC-MS	N.D.	5	--
Octabromobiphenyl	mg/kg	IEC 62321-6:2015, GC-MS	N.D.	5	--
Nonabromobiphenyl	mg/kg	IEC 62321-6:2015, GC-MS	N.D.	5	--
Decabromobiphenyl	mg/kg	IEC 62321-6:2015, GC-MS	N.D.	5	--
Sum of PBDEs	mg/kg	IEC 62321-6:2015, GC-MS	N.D.	5	1000
Monobromodiphenyl ether	mg/kg	IEC 62321-6:2015, GC-MS	N.D.	5	--
Dibromodiphenyl ether	mg/kg	IEC 62321-6:2015, GC-MS	N.D.	5	--
Tribromodiphenyl ether	mg/kg	IEC 62321-6:2015, GC-MS	N.D.	5	--

Tetrabromodiphenyl ether	mg/kg	IEC 62321-6:2015, GC-MS	N.D.	5	--
Pentabromodiphenyl ether	mg/kg	IEC 62321-6:2015, GC-MS	N.D.	5	--
Hexabromodiphenyl ether	mg/kg	IEC 62321-6:2015, GC-MS	N.D.	5	--
Heptabromodiphenyl ether	mg/kg	IEC 62321-6:2015, GC-MS	N.D.	5	--
Octabromodiphenyl ether	mg/kg	IEC 62321-6:2015, GC-MS	N.D.	5	--
Nonabromodiphenyl ether	mg/kg	IEC 62321-6:2015, GC-MS	N.D.	5	--
--Decabromodiphenyl ether	mg/kg	IEC 62321-6:2015, GC-MS	N.D.	5	--
Dibutyl Phthalate(DBP)	mg/kg	IEC 62321-8 (111/321/CD), GC-MS	N.D.	50	1000
Benzylbutyl Phthalate(BBP)	mg/kg	IEC 62321-8 (111/321/CD), GC-MS	N.D.	50	1000
Di-(2-ethylhexyl) Phthalate(DEHP)	mg/kg	IEC 62321-8 (111/321/CD), GC-MS	N.D.	50	1000
Diisobutyl phthalate (DIBP)	mg/kg	IEC 62321-8 (111/321/CD), GC-MS	N.D.	50	1000

Test Result(No.16):

Test Item(s)	Unit	Test Method (Reference)	Result	MDL	Limit
Cadmium(Cd)	mg/kg	IEC 62321-5:2013, ICP-OES	N.D.	2	100
Lead(Pb)	mg/kg	IEC 62321-5:2013, ICP-OES	N.D.	2	1000
Mercury(Hg)	mg/kg	IEC 62321-4:2013, ICP-OES	N.D.	2	1000
Hexavalent Chromium(CrVI)	mg/kg	IEC 62321:2008, UV-Vis	N.D.	2	1000
Sum of PBBs	mg/kg	IEC 62321-6:2015, GC-MS	N.D.	--	1000
Monobromobiphenyl	mg/kg	IEC 62321-6:2015, GC-MS	N.D.	5	--
Dibromobiphenyl	mg/kg	IEC 62321-6:2015, GC-MS	N.D.	5	--
Tribromobiphenyl	mg/kg	IEC 62321-6:2015, GC-MS	N.D.	5	--
Tetrabromobiphenyl	mg/kg	IEC 62321-6:2015, GC-MS	N.D.	5	--
Pentabromobiphenyl	mg/kg	IEC 62321-6:2015, GC-MS	N.D.	5	--
Hexabromobiphenyl	mg/kg	IEC 62321-6:2015, GC-MS	N.D.	5	--
Heptabromobiphenyl	mg/kg	IEC 62321-6:2015, GC-MS	N.D.	5	--
Octabromobiphenyl	mg/kg	IEC 62321-6:2015, GC-MS	N.D.	5	--
Nonabromobiphenyl	mg/kg	IEC 62321-6:2015, GC-MS	N.D.	5	--
Decabromobiphenyl	mg/kg	IEC 62321-6:2015, GC-MS	N.D.	5	--
Sum of PBDEs	mg/kg	IEC 62321-6:2015, GC-MS	N.D.	5	1000

Monobromodiphenyl ether	mg/kg	IEC 62321-6:2015, GC-MS	N.D.	5	--
Dibromodiphenyl ether	mg/kg	IEC 62321-6:2015, GC-MS	N.D.	5	--
Tribromodiphenyl ether	mg/kg	IEC 62321-6:2015, GC-MS	N.D.	5	--
Tetrabromodiphenyl ether	mg/kg	IEC 62321-6:2015, GC-MS	N.D.	5	--
Pentabromodiphenyl ether	mg/kg	IEC 62321-6:2015, GC-MS	N.D.	5	--
Hexabromodiphenyl ether	mg/kg	IEC 62321-6:2015, GC-MS	N.D.	5	--
Heptabromodiphenyl ether	mg/kg	IEC 62321-6:2015, GC-MS	N.D.	5	--
Octabromodiphenyl ether	mg/kg	IEC 62321-6:2015, GC-MS	N.D.	5	--
Nonabromodiphenyl ether	mg/kg	IEC 62321-6:2015, GC-MS	N.D.	5	--
--Decabromodiphenyl ether	mg/kg	IEC 62321-6:2015, GC-MS	N.D.	5	--
Dibutyl Phthalate(DBP)	mg/kg	IEC 62321-8 (111/321/CD), GC-MS	N.D.	50	1000
Benzylbutyl Phthalate(BBP)	mg/kg	IEC 62321-8 (111/321/CD), GC-MS	N.D.	50	1000
Di-(2-ethylhexyl) Phthalate(DEHP)	mg/kg	IEC 62321-8 (111/321/CD), GC-MS	N.D.	50	1000
Diisobutyl phthalate (DIBP)	mg/kg	IEC 62321-8 (111/321/CD), GC-MS	N.D.	50	1000

Test Result(No.17):

Test Item(s)	Unit	Test Method (Reference)	Result	MDL	Limit
Cadmium(Cd)	mg/kg	IEC 62321-5:2013, ICP-OES	N.D.	2	100
Lead(Pb)	mg/kg	IEC 62321-5:2013, ICP-OES	N.D.	2	1000
Mercury(Hg)	mg/kg	IEC 62321-4:2013, ICP-OES	N.D.	2	1000
Hexavalent Chromium(CrVI)	mg/kg	IEC 62321:2008, UV-Vis	N.D.	2	1000
Sum of PBBs	mg/kg	IEC 62321-6:2015, GC-MS	N.D.	--	1000
Monobromobiphenyl	mg/kg	IEC 62321-6:2015, GC-MS	N.D.	5	--
Dibromobiphenyl	mg/kg	IEC 62321-6:2015, GC-MS	N.D.	5	--
Tribromobiphenyl	mg/kg	IEC 62321-6:2015, GC-MS	N.D.	5	--
Tetrabromobiphenyl	mg/kg	IEC 62321-6:2015, GC-MS	N.D.	5	--
Pentabromobiphenyl	mg/kg	IEC 62321-6:2015, GC-MS	N.D.	5	--
Hexabromobiphenyl	mg/kg	IEC 62321-6:2015, GC-MS	N.D.	5	--
Heptabromobiphenyl	mg/kg	IEC 62321-6:2015, GC-MS	N.D.	5	--
Octabromobiphenyl	mg/kg	IEC 62321-6:2015, GC-MS	N.D.	5	--

Nonabromobiphenyl	mg/kg	IEC 62321-6:2015, GC-MS	N.D.	5	--
Decabromobiphenyl	mg/kg	IEC 62321-6:2015, GC-MS	N.D.	5	--
Sum of PBDEs	mg/kg	IEC 62321-6:2015, GC-MS	N.D.	5	1000
Monobromodiphenyl ether	mg/kg	IEC 62321-6:2015, GC-MS	N.D.	5	--
Dibromodiphenyl ether	mg/kg	IEC 62321-6:2015, GC-MS	N.D.	5	--
Tribromodiphenyl ether	mg/kg	IEC 62321-6:2015, GC-MS	N.D.	5	--
Tetrabromodiphenyl ether	mg/kg	IEC 62321-6:2015, GC-MS	N.D.	5	--
Pentabromodiphenyl ether	mg/kg	IEC 62321-6:2015, GC-MS	N.D.	5	--
Hexabromodiphenyl ether	mg/kg	IEC 62321-6:2015, GC-MS	N.D.	5	--
Heptabromodiphenyl ether	mg/kg	IEC 62321-6:2015, GC-MS	N.D.	5	--
Octabromodiphenyl ether	mg/kg	IEC 62321-6:2015, GC-MS	N.D.	5	--
Nonabromodiphenyl ether	mg/kg	IEC 62321-6:2015, GC-MS	N.D.	5	--
--Decabromodiphenyl ether	mg/kg	IEC 62321-6:2015, GC-MS	N.D.	5	--
Dibutyl Phthalate(DBP)	mg/kg	IEC 62321-8 (111/321/CD), GC-MS	N.D.	50	1000
Benzylbutyl Phthalate(BBP)	mg/kg	IEC 62321-8 (111/321/CD), GC-MS	N.D.	50	1000
Di-(2-ethylhexyl) Phthalate(DEHP)	mg/kg	IEC 62321-8 (111/321/CD), GC-MS	N.D.	50	1000
Diisobutyl phthalate (DIBP)	mg/kg	IEC 62321-8 (111/321/CD), GC-MS	N.D.	50	1000

Test Result(No.18):

Test Item(s)	Unit	Test Method (Reference)	Result	MDL	Limit
Cadmium(Cd)	mg/kg	IEC 62321-5:2013, ICP-OES	N.D.	2	100
Lead(Pb)	mg/kg	IEC 62321-5:2013, ICP-OES	N.D.	2	1000
Mercury(Hg)	mg/kg	IEC 62321-4:2013, ICP-OES	N.D.	2	1000
Hexavalent Chromium(CrVI)	mg/kg	IEC 62321:2008, UV-Vis	N.D.	2	1000
Sum of PBBs	mg/kg	IEC 62321-6:2015, GC-MS	N.D.	--	1000
Monobromobiphenyl	mg/kg	IEC 62321-6:2015, GC-MS	N.D.	5	--
Dibromobiphenyl	mg/kg	IEC 62321-6:2015, GC-MS	N.D.	5	--
Tribromobiphenyl	mg/kg	IEC 62321-6:2015, GC-MS	N.D.	5	--
Tetrabromobiphenyl	mg/kg	IEC 62321-6:2015, GC-MS	N.D.	5	--
Pentabromobiphenyl	mg/kg	IEC 62321-6:2015, GC-MS	N.D.	5	--

Hexabromobiphenyl	mg/kg	IEC 62321-6:2015, GC-MS	N.D.	5	--
Heptabromobiphenyl	mg/kg	IEC 62321-6:2015, GC-MS	N.D.	5	--
Octabromobiphenyl	mg/kg	IEC 62321-6:2015, GC-MS	N.D.	5	--
Nonabromobiphenyl	mg/kg	IEC 62321-6:2015, GC-MS	N.D.	5	--
Decabromobiphenyl	mg/kg	IEC 62321-6:2015, GC-MS	N.D.	5	--
Sum of PBDEs	mg/kg	IEC 62321-6:2015, GC-MS	N.D.	5	1000
Monobromodiphenyl ether	mg/kg	IEC 62321-6:2015, GC-MS	N.D.	5	--
Dibromodiphenyl ether	mg/kg	IEC 62321-6:2015, GC-MS	N.D.	5	--
Tribromodiphenyl ether	mg/kg	IEC 62321-6:2015, GC-MS	N.D.	5	--
Tetrabromodiphenyl ether	mg/kg	IEC 62321-6:2015, GC-MS	N.D.	5	--
Pentabromodiphenyl ether	mg/kg	IEC 62321-6:2015, GC-MS	N.D.	5	--
Hexabromodiphenyl ether	mg/kg	IEC 62321-6:2015, GC-MS	N.D.	5	--
Heptabromodiphenyl ether	mg/kg	IEC 62321-6:2015, GC-MS	N.D.	5	--
Octabromodiphenyl ether	mg/kg	IEC 62321-6:2015, GC-MS	N.D.	5	--
Nonabromodiphenyl ether	mg/kg	IEC 62321-6:2015, GC-MS	N.D.	5	--
--Decabromodiphenyl ether	mg/kg	IEC 62321-6:2015, GC-MS	N.D.	5	--
Dibutyl Phthalate(DBP)	mg/kg	IEC 62321-8 (111/321/CD), GC-MS	N.D.	50	1000
Benzylbutyl Phthalate(BBP)	mg/kg	IEC 62321-8 (111/321/CD), GC-MS	N.D.	50	1000
Di-(2-ethylhexyl) Phthalate(DEHP)	mg/kg	IEC 62321-8 (111/321/CD), GC-MS	N.D.	50	1000
Diisobutyl phthalate (DIBP)	mg/kg	IEC 62321-8 (111/321/CD), GC-MS	N.D.	50	1000

Test Result(No.19):

Test Item(s)	Unit	Test Method (Reference)	Result	MDL	Limit
Cadmium(Cd)	mg/kg	IEC 62321-5:2013, ICP-OES	N.D.	2	100
Lead(Pb)	mg/kg	IEC 62321-5:2013, ICP-OES	N.D.	2	1000
Mercury(Hg)	mg/kg	IEC 62321-4:2013, ICP-OES	N.D.	2	1000
Hexavalent Chromium(CrVI)	mg/kg	IEC 62321:2008, UV-Vis	N.D.	2	1000
Sum of PBBs	mg/kg	IEC 62321-6:2015, GC-MS	N.D.	--	1000
Monobromobiphenyl	mg/kg	IEC 62321-6:2015, GC-MS	N.D.	5	--
Dibromobiphenyl	mg/kg	IEC 62321-6:2015, GC-MS	N.D.	5	--

Tribromobiphenyl	mg/kg	IEC 62321-6:2015, GC-MS	N.D.	5	--
Tetrabromobiphenyl	mg/kg	IEC 62321-6:2015, GC-MS	N.D.	5	--
Pentabromobiphenyl	mg/kg	IEC 62321-6:2015, GC-MS	N.D.	5	--
Hexabromobiphenyl	mg/kg	IEC 62321-6:2015, GC-MS	N.D.	5	--
Heptabromobiphenyl	mg/kg	IEC 62321-6:2015, GC-MS	N.D.	5	--
Octabromobiphenyl	mg/kg	IEC 62321-6:2015, GC-MS	N.D.	5	--
Nonabromobiphenyl	mg/kg	IEC 62321-6:2015, GC-MS	N.D.	5	--
Decabromobiphenyl	mg/kg	IEC 62321-6:2015, GC-MS	N.D.	5	--
Sum of PBDEs	mg/kg	IEC 62321-6:2015, GC-MS	N.D.	5	1000
Monobromodiphenyl ether	mg/kg	IEC 62321-6:2015, GC-MS	N.D.	5	--
Dibromodiphenyl ether	mg/kg	IEC 62321-6:2015, GC-MS	N.D.	5	--
Tribromodiphenyl ether	mg/kg	IEC 62321-6:2015, GC-MS	N.D.	5	--
Tetrabromodiphenyl ether	mg/kg	IEC 62321-6:2015, GC-MS	N.D.	5	--
Pentabromodiphenyl ether	mg/kg	IEC 62321-6:2015, GC-MS	N.D.	5	--
Hexabromodiphenyl ether	mg/kg	IEC 62321-6:2015, GC-MS	N.D.	5	--
Heptabromodiphenyl ether	mg/kg	IEC 62321-6:2015, GC-MS	N.D.	5	--
Octabromodiphenyl ether	mg/kg	IEC 62321-6:2015, GC-MS	N.D.	5	--
Nonabromodiphenyl ether	mg/kg	IEC 62321-6:2015, GC-MS	N.D.	5	--
--Decabromodiphenyl ether	mg/kg	IEC 62321-6:2015, GC-MS	N.D.	5	--
Dibutyl Phthalate(DBP)	mg/kg	IEC 62321-8 (111/321/CD), GC-MS	N.D.	50	1000
Benzylbutyl Phthalate(BBP)	mg/kg	IEC 62321-8 (111/321/CD), GC-MS	N.D.	50	1000
Di-(2-ethylhexyl) Phthalate(DEHP)	mg/kg	IEC 62321-8 (111/321/CD), GC-MS	N.D.	50	1000
Diisobutyl phthalate (DIBP)	mg/kg	IEC 62321-8 (111/321/CD), GC-MS	N.D.	50	1000

Test Result(No.20):

Test Item(s)	Unit	Test Method (Reference)	Result	MDL	Limit
Cadmium(Cd)	mg/kg	IEC 62321-5:2013, ICP-OES	N.D.	2	100
Lead(Pb)	mg/kg	IEC 62321-5:2013, ICP-OES	N.D.	2	1000
Mercury(Hg)	mg/kg	IEC 62321-4:2013, ICP-OES	N.D.	2	1000
Hexavalent Chromium(CrVI)	mg/kg	IEC 62321:2008, UV-Vis	N.D.	2	1000

Sum of PBBs	mg/kg	IEC 62321-6:2015, GC-MS	N.D.	--	1000
Monobromobiphenyl	mg/kg	IEC 62321-6:2015, GC-MS	N.D.	5	--
Dibromobiphenyl	mg/kg	IEC 62321-6:2015, GC-MS	N.D.	5	--
Tribromobiphenyl	mg/kg	IEC 62321-6:2015, GC-MS	N.D.	5	--
Tetrabromobiphenyl	mg/kg	IEC 62321-6:2015, GC-MS	N.D.	5	--
Pentabromobiphenyl	mg/kg	IEC 62321-6:2015, GC-MS	N.D.	5	--
Hexabromobiphenyl	mg/kg	IEC 62321-6:2015, GC-MS	N.D.	5	--
Heptabromobiphenyl	mg/kg	IEC 62321-6:2015, GC-MS	N.D.	5	--
Octabromobiphenyl	mg/kg	IEC 62321-6:2015, GC-MS	N.D.	5	--
Nonabromobiphenyl	mg/kg	IEC 62321-6:2015, GC-MS	N.D.	5	--
Decabromobiphenyl	mg/kg	IEC 62321-6:2015, GC-MS	N.D.	5	--
Sum of PBDEs	mg/kg	IEC 62321-6:2015, GC-MS	N.D.	5	1000
Monobromodiphenyl ether	mg/kg	IEC 62321-6:2015, GC-MS	N.D.	5	--
Dibromodiphenyl ether	mg/kg	IEC 62321-6:2015, GC-MS	N.D.	5	--
Tribromodiphenyl ether	mg/kg	IEC 62321-6:2015, GC-MS	N.D.	5	--
Tetrabromodiphenyl ether	mg/kg	IEC 62321-6:2015, GC-MS	N.D.	5	--
Pentabromodiphenyl ether	mg/kg	IEC 62321-6:2015, GC-MS	N.D.	5	--
Hexabromodiphenyl ether	mg/kg	IEC 62321-6:2015, GC-MS	N.D.	5	--
Heptabromodiphenyl ether	mg/kg	IEC 62321-6:2015, GC-MS	N.D.	5	--
Octabromodiphenyl ether	mg/kg	IEC 62321-6:2015, GC-MS	N.D.	5	--
Nonabromodiphenyl ether	mg/kg	IEC 62321-6:2015, GC-MS	N.D.	5	--
--Decabromodiphenyl ether	mg/kg	IEC 62321-6:2015, GC-MS	N.D.	5	--
Dibutyl Phthalate(DBP)	mg/kg	IEC 62321-8 (111/321/CD), GC-MS	N.D.	50	1000
Benzylbutyl Phthalate(BBP)	mg/kg	IEC 62321-8 (111/321/CD), GC-MS	N.D.	50	1000
Di-(2-ethylhexyl) Phthalate(DEHP)	mg/kg	IEC 62321-8 (111/321/CD), GC-MS	N.D.	50	1000
Diisobutyl phthalate (DIBP)	mg/kg	IEC 62321-8 (111/321/CD), GC-MS	N.D.	50	1000

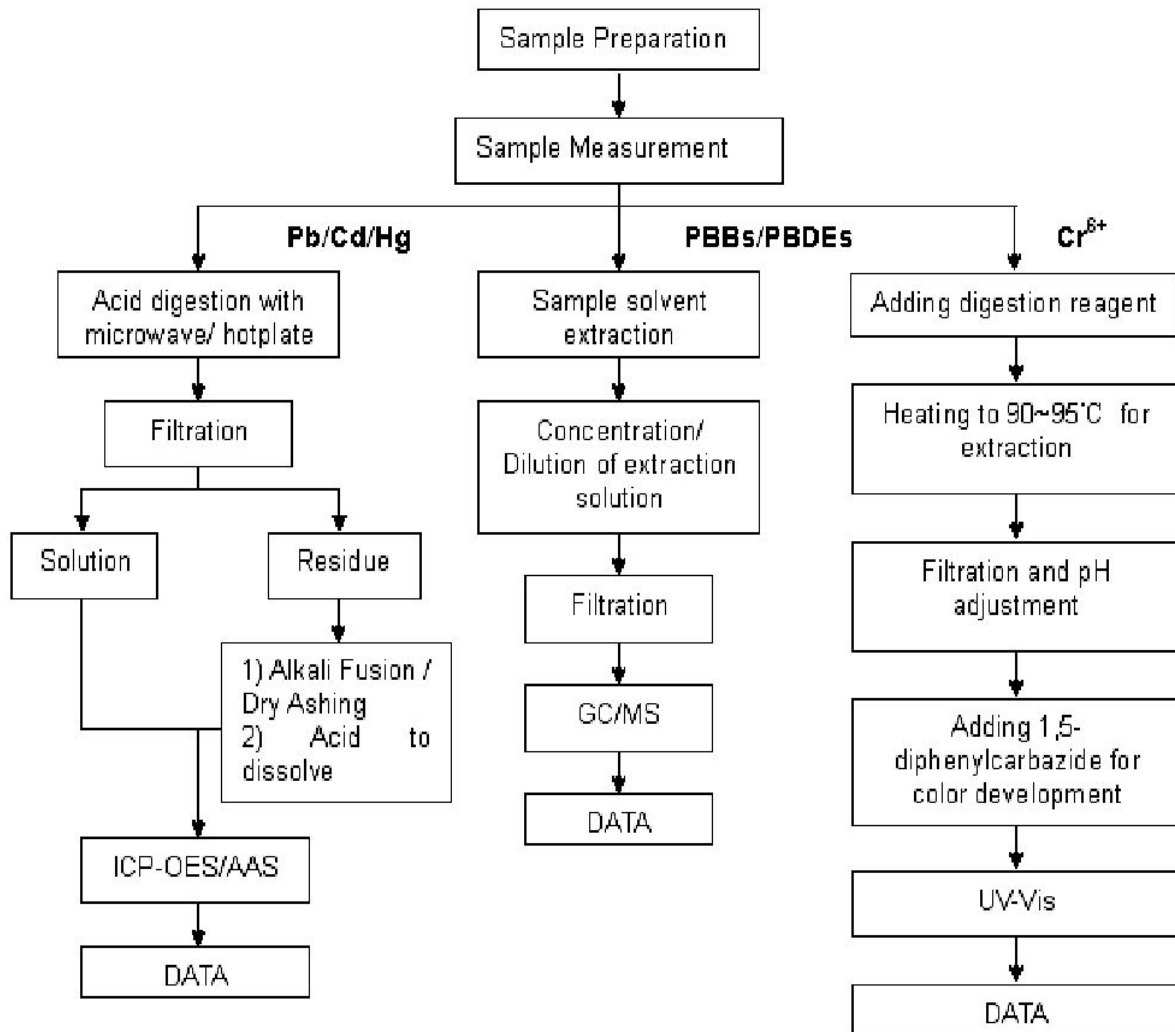
Test Result(No.21):

Test Item(s)	Unit	Test Method (Reference)	Result	MDL	Limit
Cadmium(Cd)	mg/kg	IEC 62321-5:2013, ICP-OES	N.D.	2	100
Lead(Pb)	mg/kg	IEC 62321-5:2013, ICP-OES	N.D.	2	1000

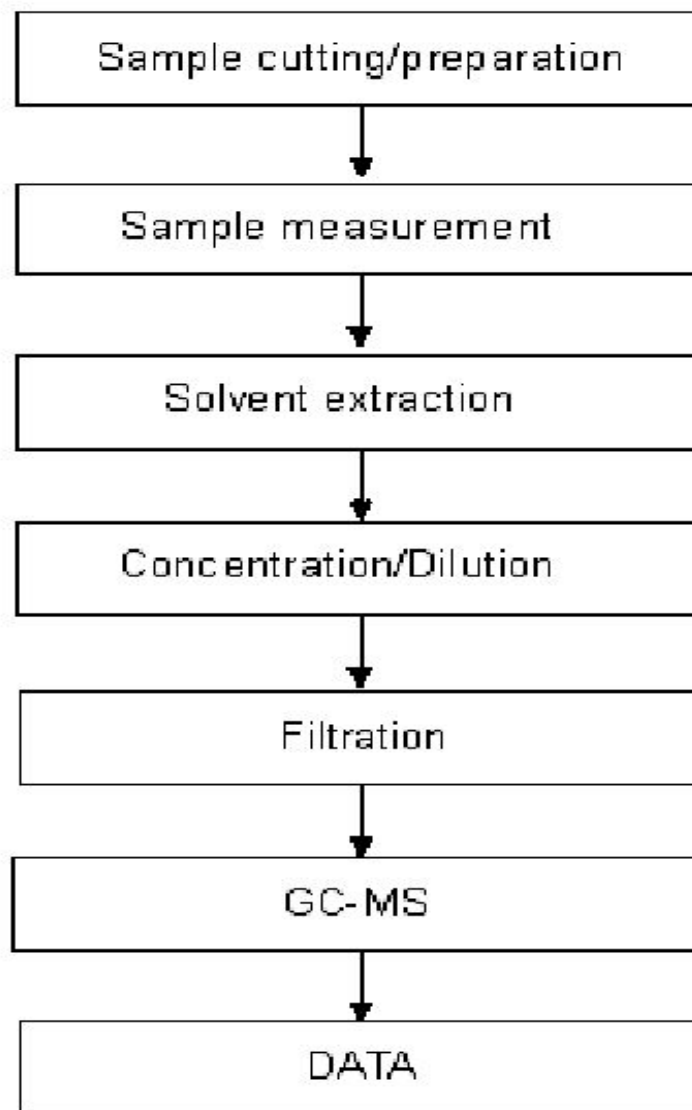
Mercury(Hg)	mg/kg	IEC 62321-4:2013, ICP-OES	N.D.	2	1000
Hexavalent Chromium(CrVI)	mg/kg	IEC 62321:2008, UV-Vis	N.D.	2	1000
Sum of PBBs	mg/kg	IEC 62321-6:2015, GC-MS	N.D.	--	1000
Monobromobiphenyl	mg/kg	IEC 62321-6:2015, GC-MS	N.D.	5	--
Dibromobiphenyl	mg/kg	IEC 62321-6:2015, GC-MS	N.D.	5	--
Tribromobiphenyl	mg/kg	IEC 62321-6:2015, GC-MS	N.D.	5	--
Tetrabromobiphenyl	mg/kg	IEC 62321-6:2015, GC-MS	N.D.	5	--
Pentabromobiphenyl	mg/kg	IEC 62321-6:2015, GC-MS	N.D.	5	--
Hexabromobiphenyl	mg/kg	IEC 62321-6:2015, GC-MS	N.D.	5	--
Heptabromobiphenyl	mg/kg	IEC 62321-6:2015, GC-MS	N.D.	5	--
Octabromobiphenyl	mg/kg	IEC 62321-6:2015, GC-MS	N.D.	5	--
Nonabromobiphenyl	mg/kg	IEC 62321-6:2015, GC-MS	N.D.	5	--
Decabromobiphenyl	mg/kg	IEC 62321-6:2015, GC-MS	N.D.	5	--
Sum of PBDEs	mg/kg	IEC 62321-6:2015, GC-MS	N.D.	5	1000
Monobromodiphenyl ether	mg/kg	IEC 62321-6:2015, GC-MS	N.D.	5	--
Dibromodiphenyl ether	mg/kg	IEC 62321-6:2015, GC-MS	N.D.	5	--
Tribromodiphenyl ether	mg/kg	IEC 62321-6:2015, GC-MS	N.D.	5	--
Tetrabromodiphenyl ether	mg/kg	IEC 62321-6:2015, GC-MS	N.D.	5	--
Pentabromodiphenyl ether	mg/kg	IEC 62321-6:2015, GC-MS	N.D.	5	--
Hexabromodiphenyl ether	mg/kg	IEC 62321-6:2015, GC-MS	N.D.	5	--
Heptabromodiphenyl ether	mg/kg	IEC 62321-6:2015, GC-MS	N.D.	5	--
Octabromodiphenyl ether	mg/kg	IEC 62321-6:2015, GC-MS	N.D.	5	--
Nonabromodiphenyl ether	mg/kg	IEC 62321-6:2015, GC-MS	N.D.	5	--
--Decabromodiphenyl ether	mg/kg	IEC 62321-6:2015, GC-MS	N.D.	5	--
Dibutyl Phthalate(DBP)	mg/kg	IEC 62321-8 (111/321/CD), GC-MS	N.D.	50	1000
Benzylbutyl Phthalate(BBP)	mg/kg	IEC 62321-8 (111/321/CD), GC-MS	N.D.	50	1000
Di-(2-ethylhexyl) Phthalate(DEHP)	mg/kg	IEC 62321-8 (111/321/CD), GC-MS	N.D.	50	1000
Diisobutyl phthalate (DIBP)	mg/kg	IEC 62321-8 (111/321/CD), GC-MS	N.D.	50	1000

- Note: 1. mg/kg= ppm
2. N.D.= No Detection(<MDL)
3. MDL = Method Detection Limit
4. -- = No Testing

ATTACHMENT: Cd/Pb/Hg/Cr⁶⁺/PBBs&PBDEs Flow Chart



ATTACHMENT: Phthalate Testing Flow Chart



Sample photo:

EUT Photo 1



EUT Photo 2



EUT Photo 3



****End of Report***